

DMATS LRTP

Chapter 3

Transportation Network Profile

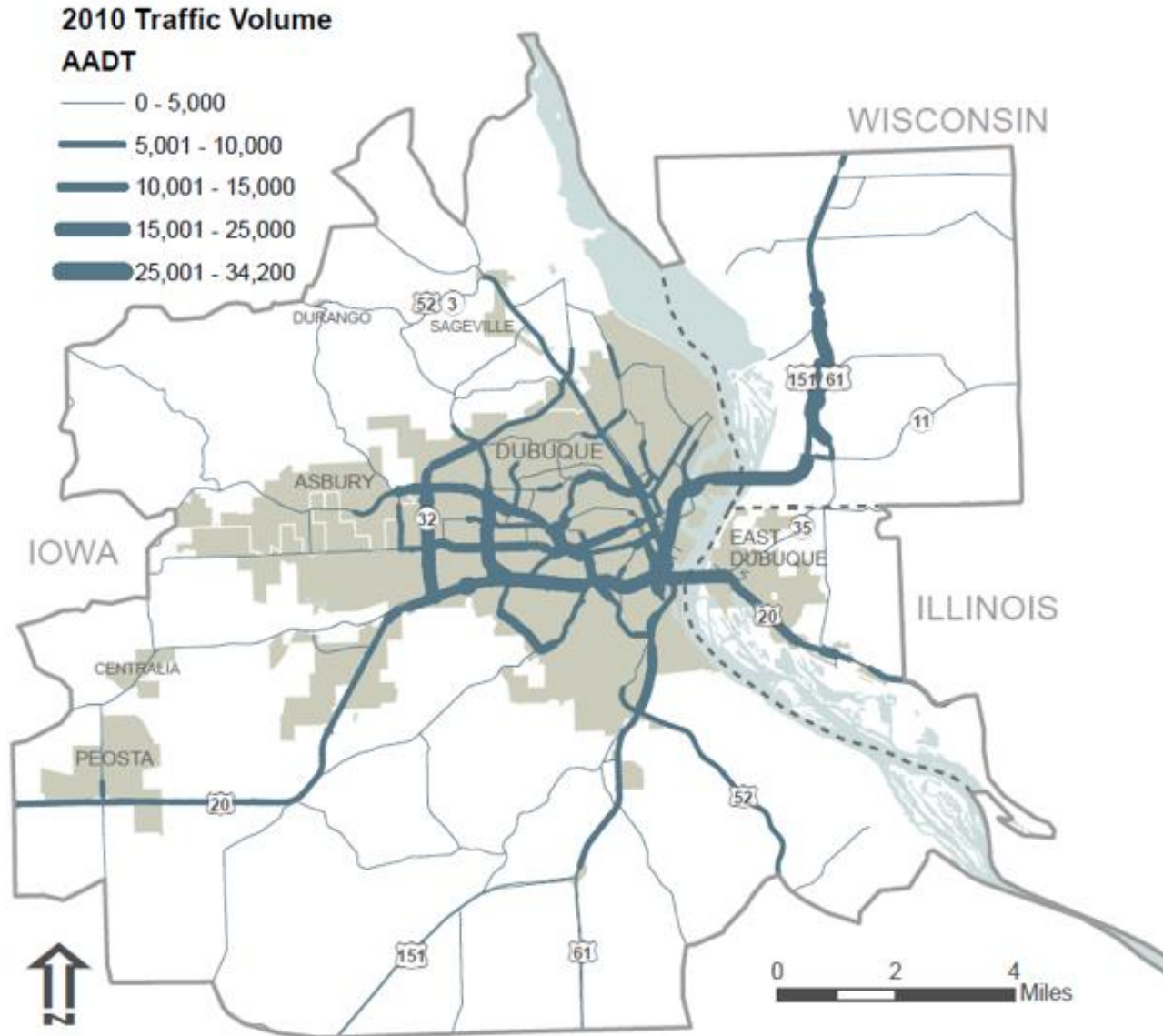
Chapter Outline

- Roads
- Transit
- Bicycle and Pedestrian
- Freight
- Airport
- Special Initiatives

Roads

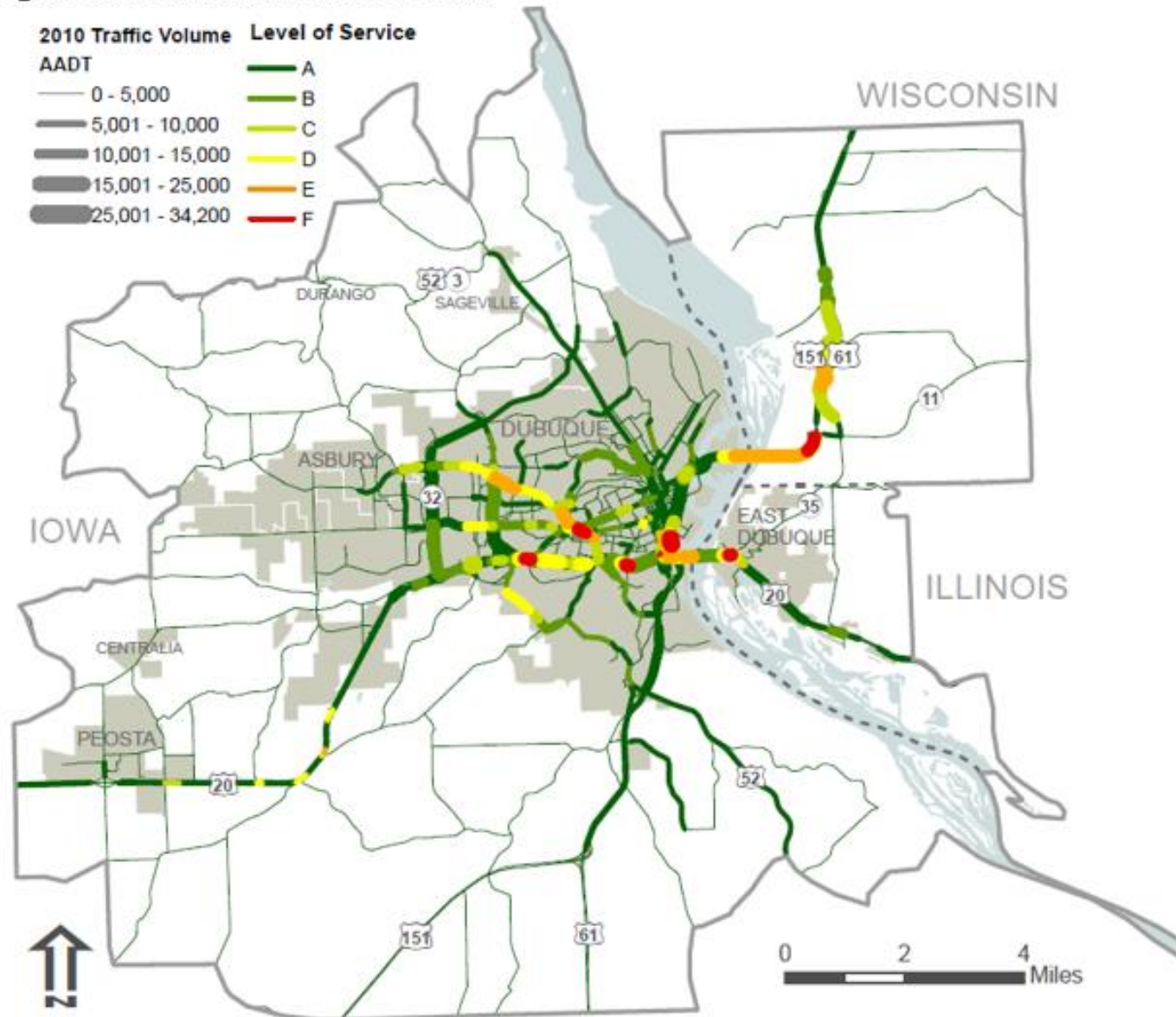
- Functional Classification
- Traffic Volume
- Level of Service
- Vehicle Crashes

Figure 3.3 2010 DMATS Traffic Volume



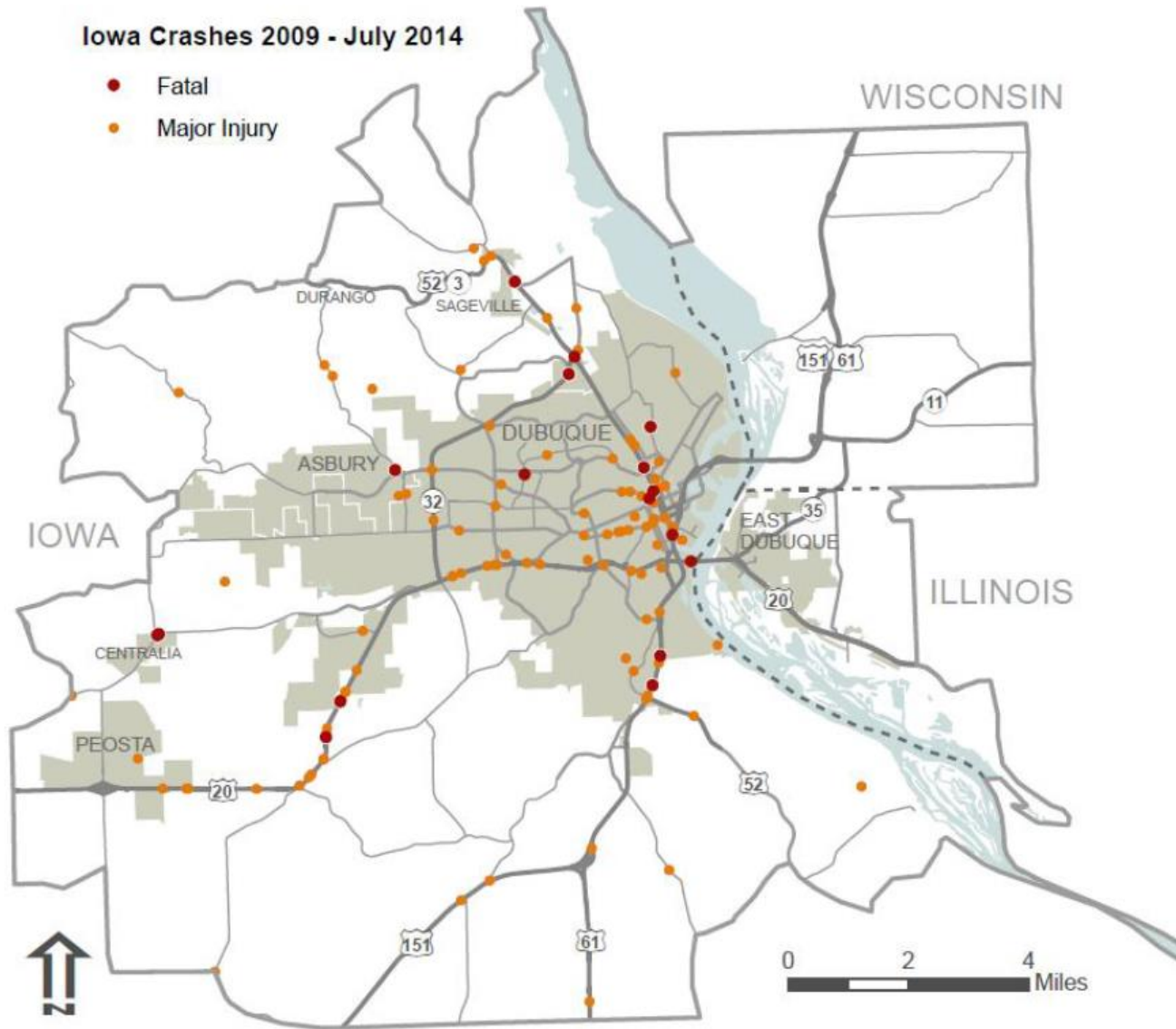
Source: Iowa DOT Traffic Counts, DMATS Travel Demand Forecast Model

Figure 3.4 2010 DMATS Level of Service



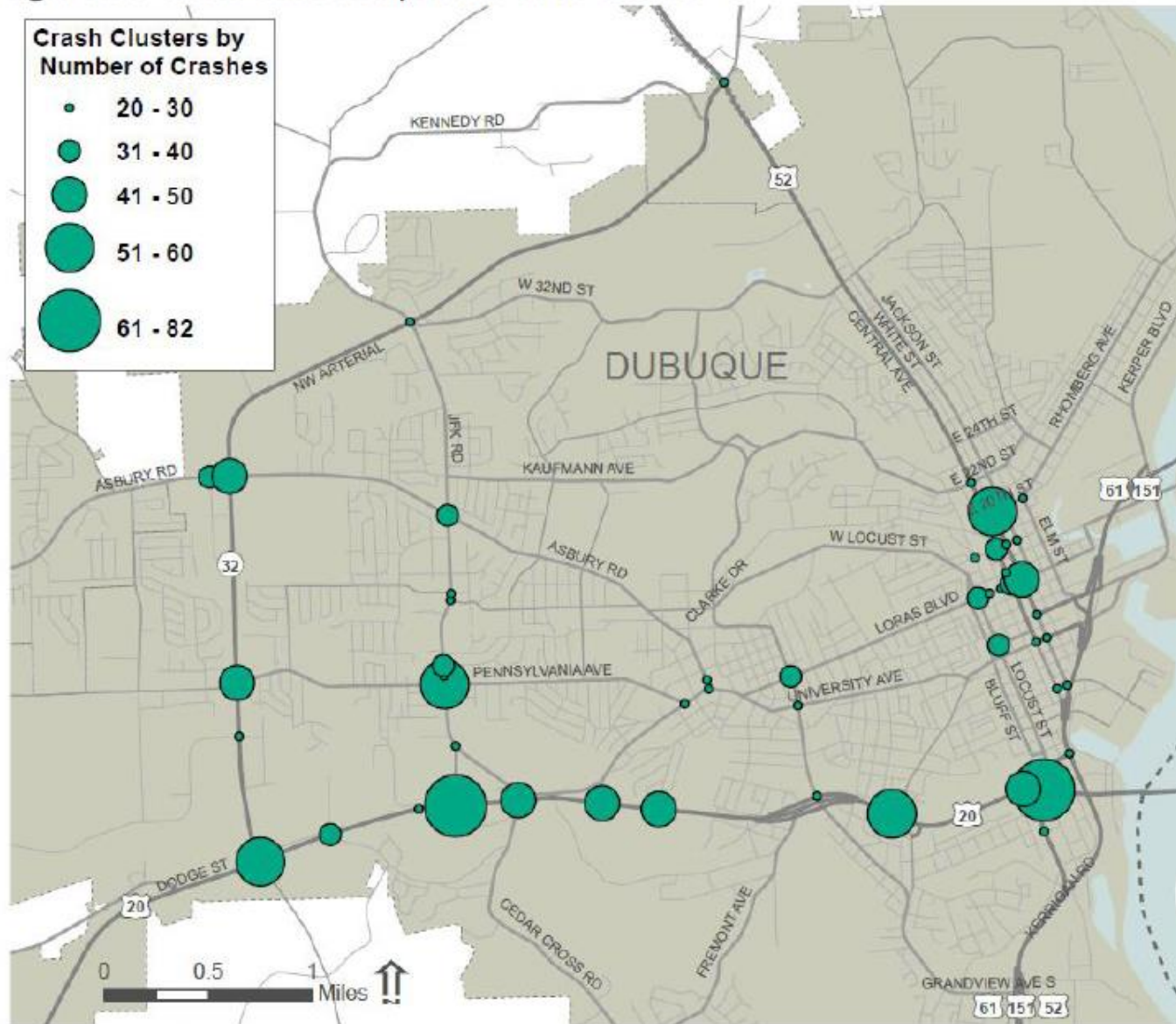
Source: State DOT Traffic Counts, and DMATS Travel Demand Forecast Model

Figure 3.6 Fatal and Major Injury Crashes (Iowa Only)



Source: Iowa DOT Crash 2009–July 2014

Figure 3.7 Crash Clusters by Number of Crashes



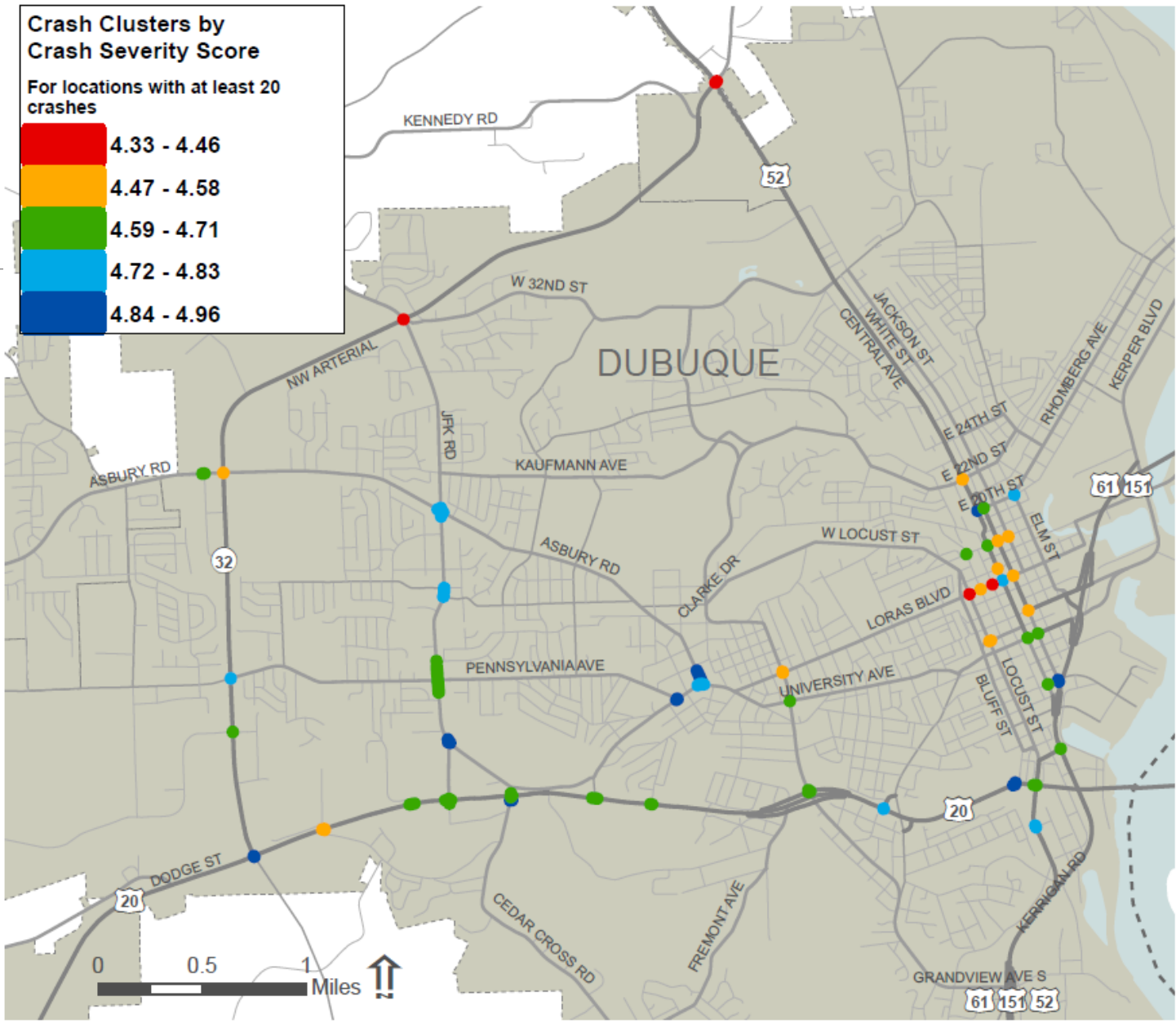
Top Ten Crash Locations by Number of Crashes

Rank	Crashes	Location
1	82	US 20 / Dodge St & Iowa 946
2	64	US 20 / Dodge St & Wacker Dr
3	56	US 20 / Dodge St & Iowa 32 / NW Arterial
4	56	US 20 / Dodge St & Hill St Ramp WB
5	53	E 20th St & White St
6	51	Pennsylvania Ave & John F Kennedy Rd
7	50	US 20 / Dodge St & Cedar Cross Rd
8	50	Asbury Rd & Iowa 32 / NW Arterial
9	45	Pennsylvania Ave & Iowa 32 / NW Arterial
10	45	E 14th St & White St

**Crash Clusters by
Crash Severity Score**

For locations with at least 20 crashes

	4.33 - 4.46
	4.47 - 4.58
	4.59 - 4.71
	4.72 - 4.83
	4.84 - 4.96



Source: Iowa DOT Crash Data 2009 - July 2014

Top Ten Crash Locations by Severity Score

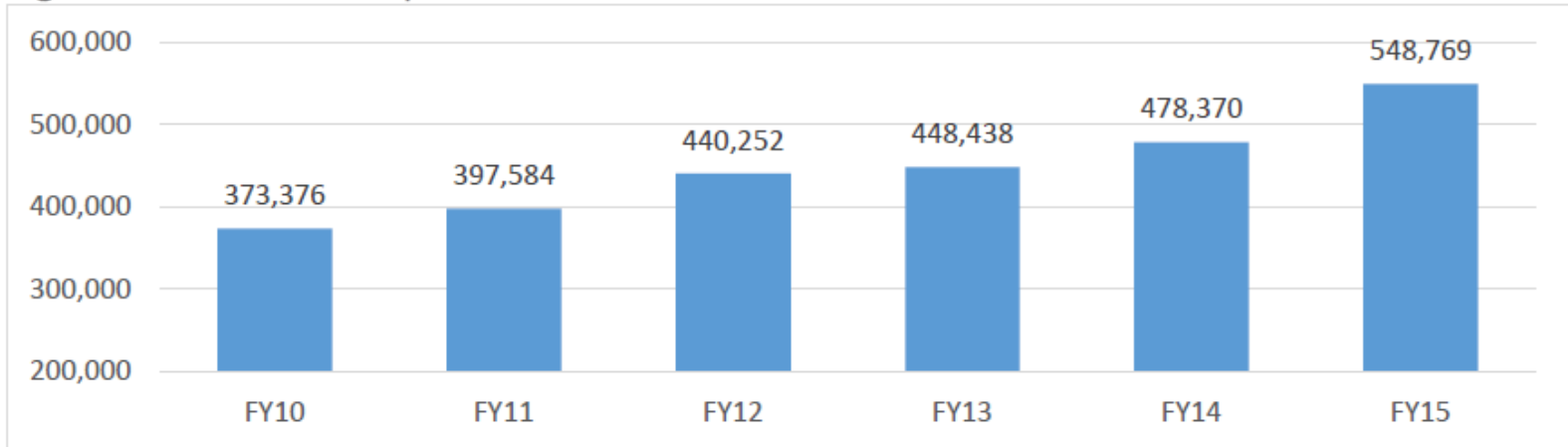
Rank	Severity Score	Location
1	4.3333	Loras Blvd & Iowa St
2	4.36	Iowa 32 / NW Arterial & US 52
3	4.4	Iowa 32 / NW Arterial & John F Kennedy Rd
4	4.4063	Loras Blvd & Locust St S
5	4.4167	Old Highway Rd & Seippel Rd
6	4.5	E 17th St & Jackson St
7	4.5172	E 22nd St & Central Ave
8	4.52	Asbury Rd & Iowa 32 / NW Arterial
9	4.5217	Loras Blvd & Main St
10	4.5333	E 14th St & White St

Transit

- The Jule
- RTA 8
- Service Maps
- Ridership Data
- DuRide
- Grant County Aging and Disability Resource Center
- Jo Daviess County Transit

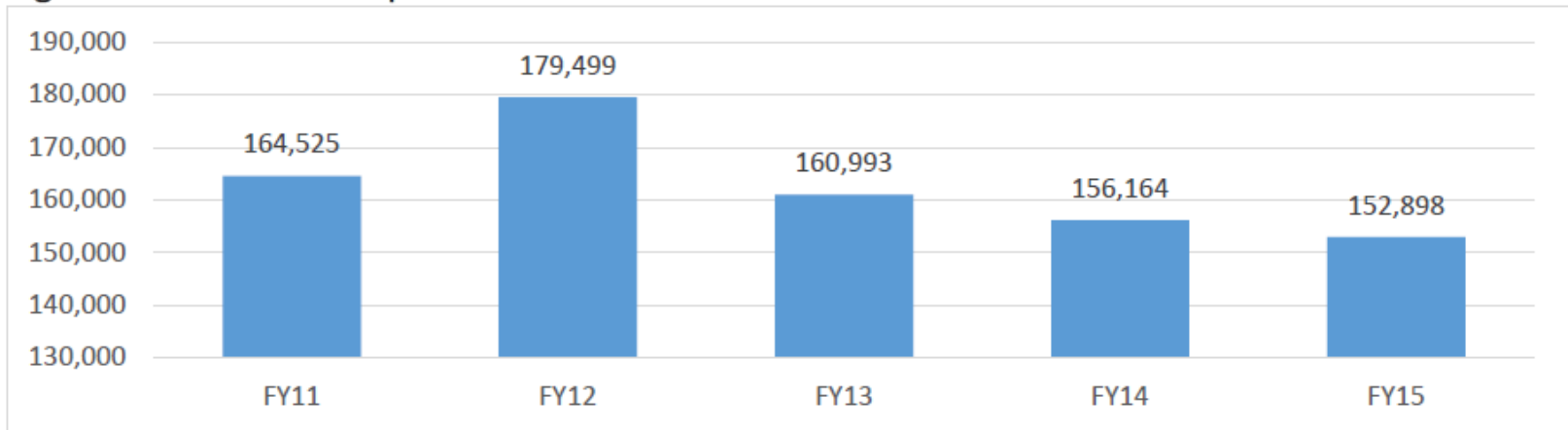
Transit

Figure 3.11 Jule Ridership



Source: The Jule

Figure 3.14 RTA Ridership

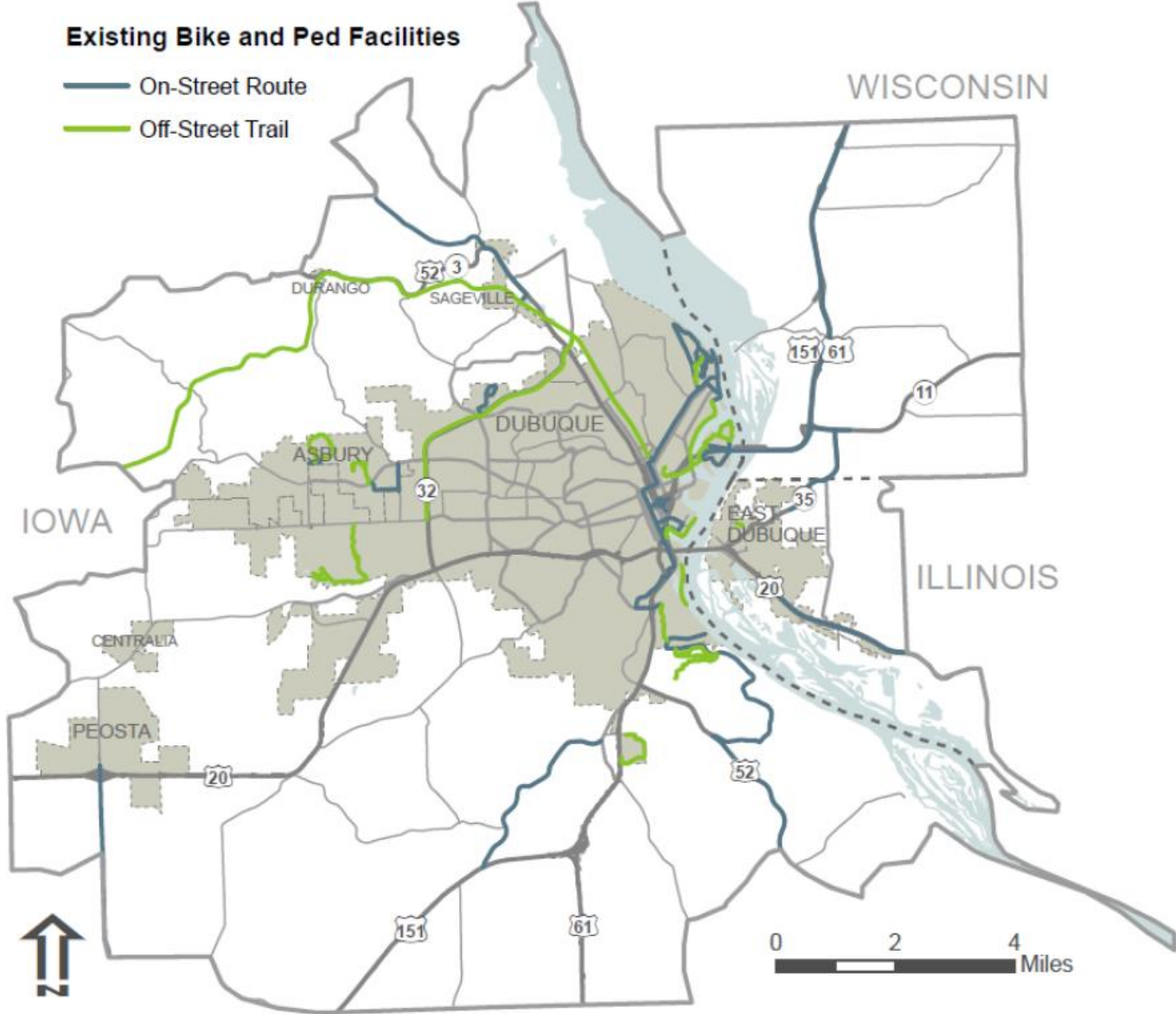


Source RTA

Bicycle and Pedestrian

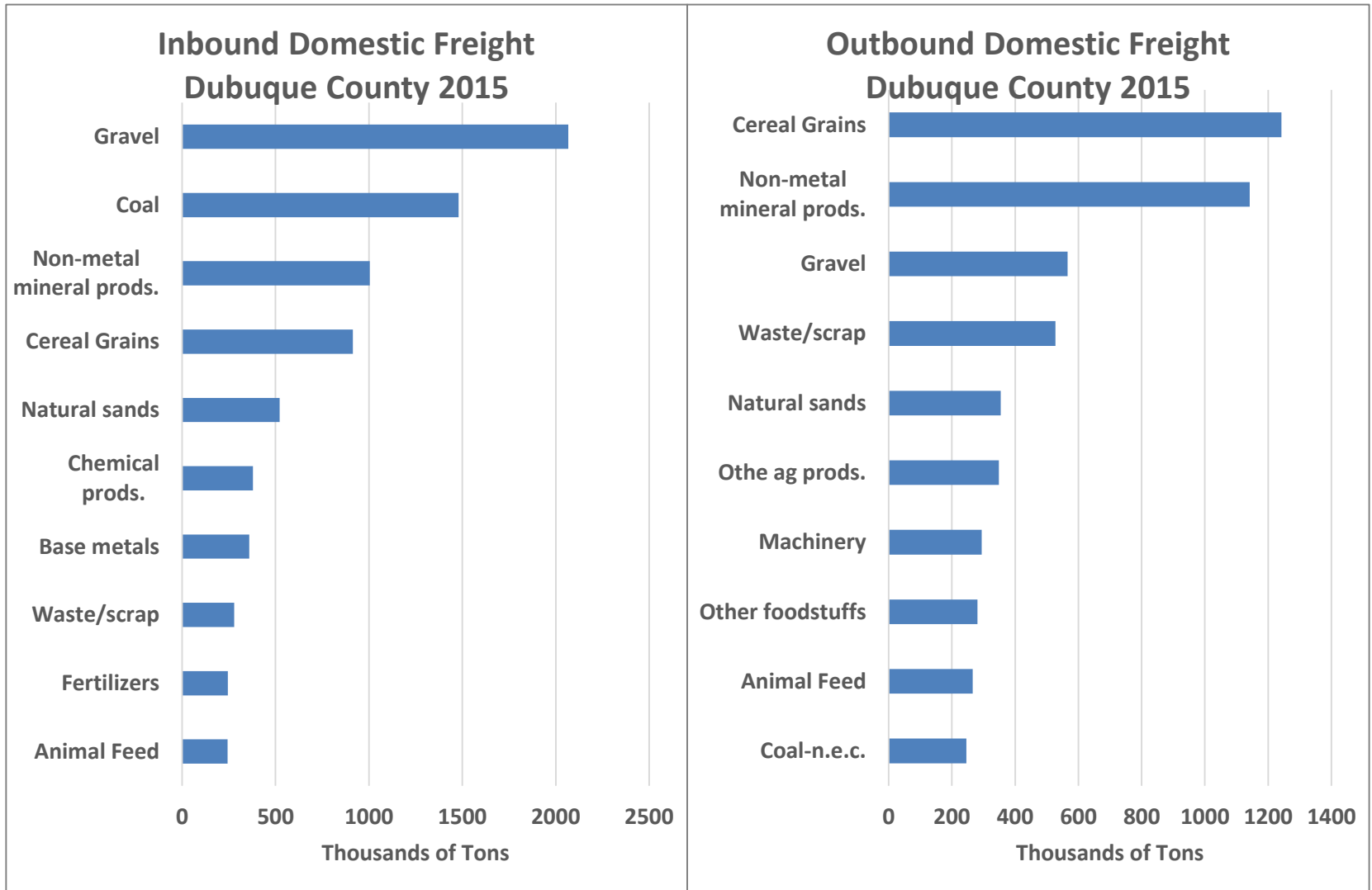
- Off Street Trails
- On Street Routes
- Sidewalks

Figure 3.16 Existing Bicycle and Pedestrian Facilities



Freight

- Inbound/Outbound Freight Data
- Rail Facilities
- Barge Facilities

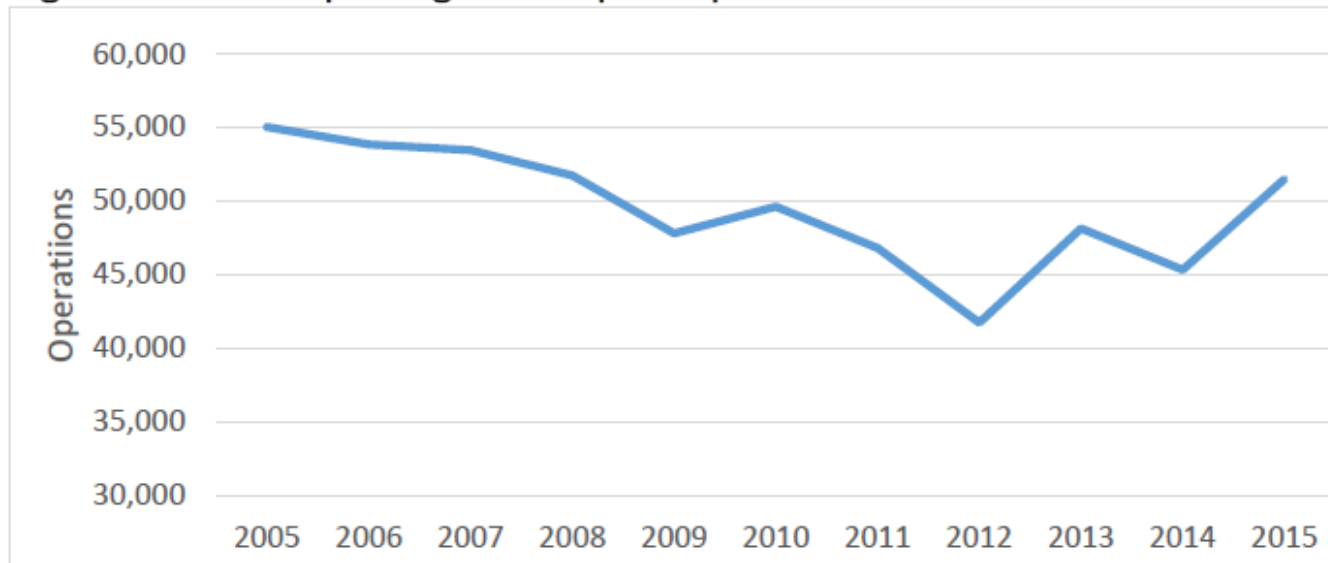


Source: FHWA Freight Analysis Framework; Iowa DOT

Airport

- Airside Facilities
- Groundside Facilities
- New Terminal
- Number of Operations

Figure 3.21 Dubuque Regional Airport Operations 2005-2015



Source: Federal Aviation Administration, Air Traffic Activity System (ATADS)

Special Initiatives

- Black Hawk Hills & ECIA Freight Study
- Smarter Travel Project