

# DMATS LRTP

## Chapter 2:

### Community Profile

---

# Chapter Outline

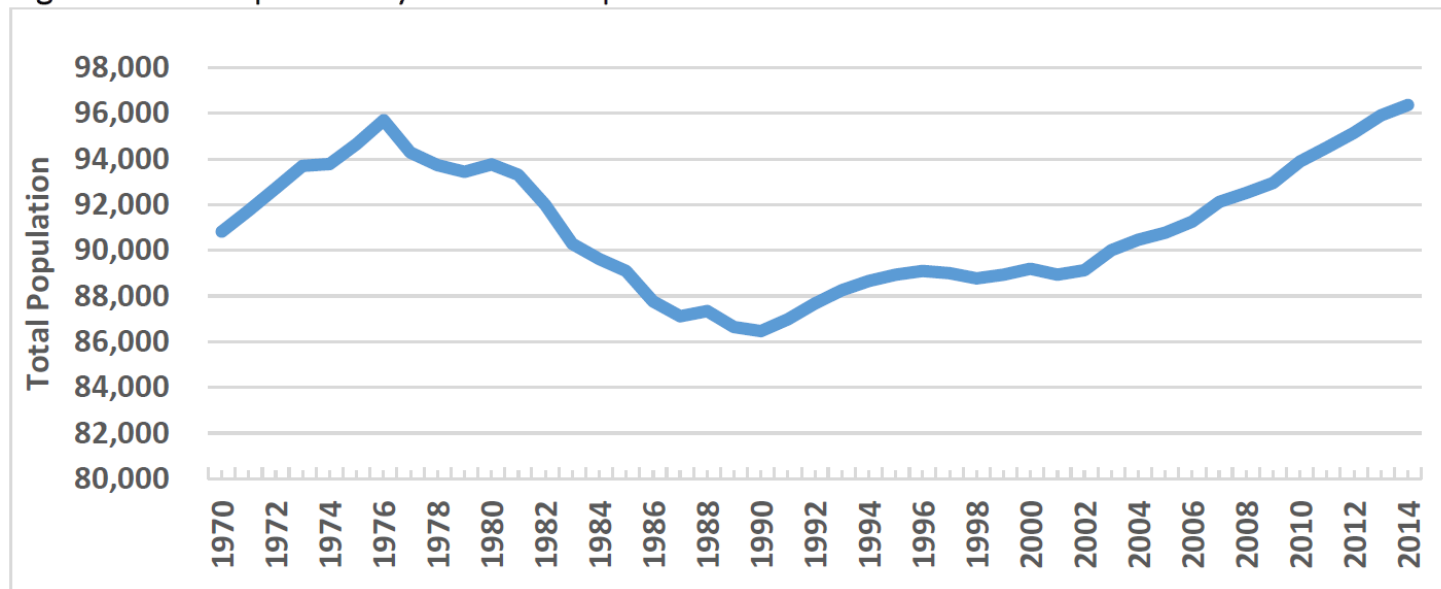
---

- Existing Population
- 2045 Population Projection
- Existing Employment
- 2045 Employment Projection
- Income
- Race and Ethnicity
- Number of Vehicles Available

# Population

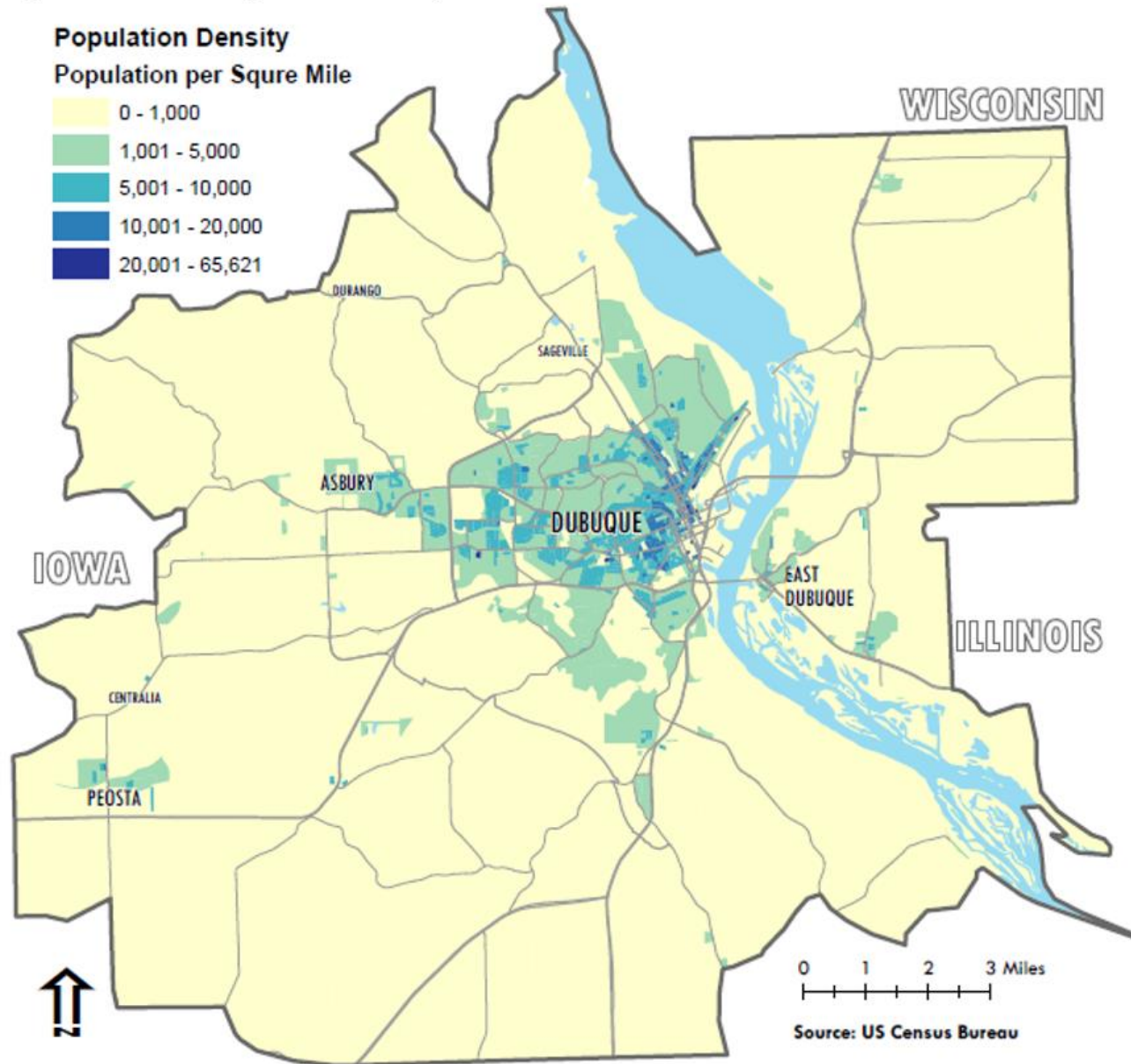
- Review historical trends
- Identify existing residential areas

Figure 2.1 Dubuque County Historical Population



Source: Woods & Poole Economics, Inc; Prepared By: State Library of Iowa, State Data Center Program

Figure 2.2 DMATS Population Density - 2010



Source: US Census Bureau, 2010 Decennial Census.

# 2045 Population Projection

---

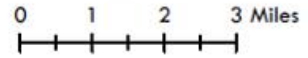
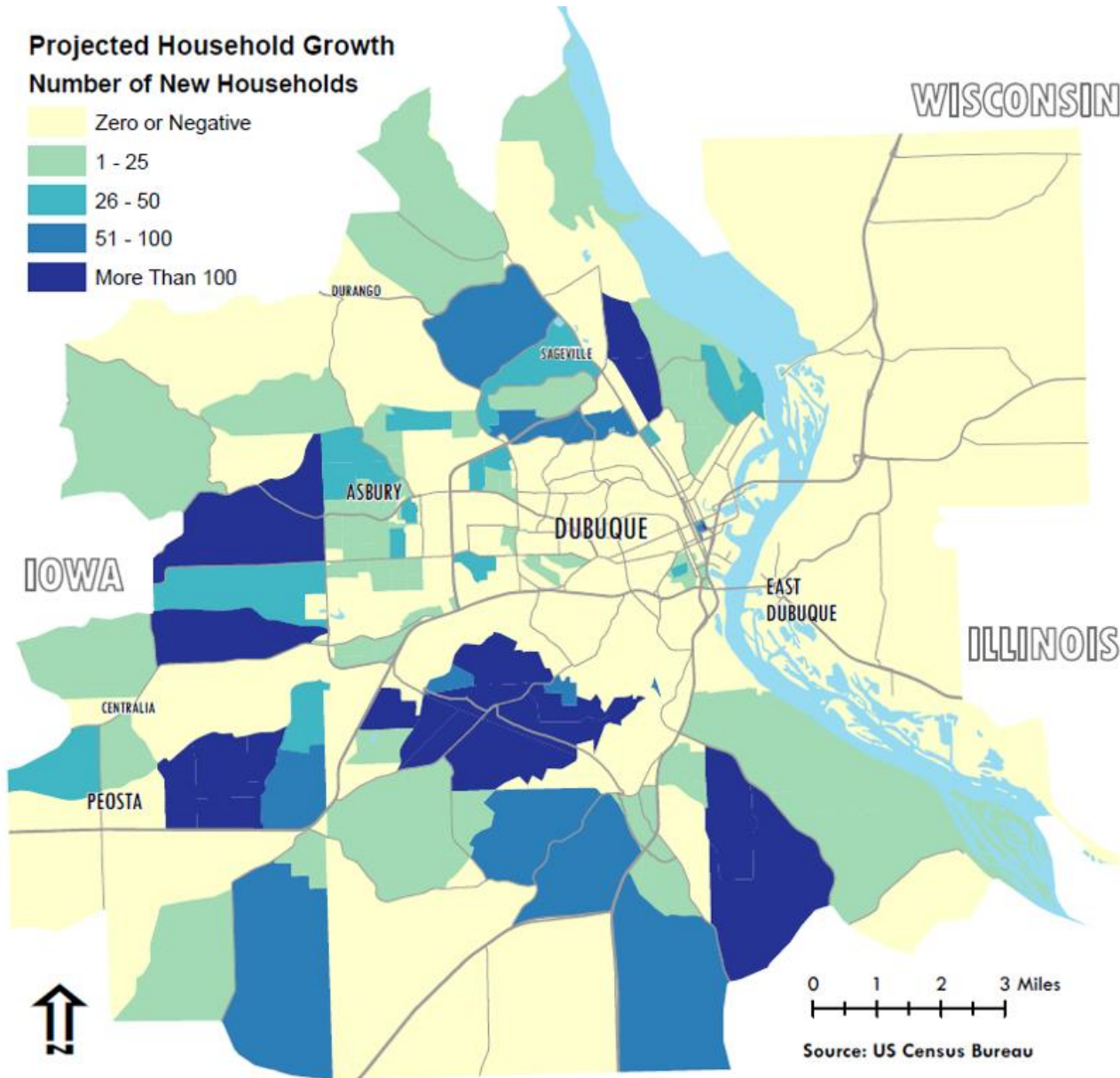
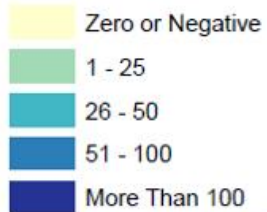
- Project population for 2045 in 5-year increments
- Age Cohorts Method
- Report results in 5-Year Age Cohorts
- Use scenario comparison to check reasonableness of projection
- Allocate projected increase across DMATS region

**Figure 2.6 DMATS Approved Population Projection Summary**

2010 Base Year Population	81,073
2045 Projected Population	104,094
Total Percent Increase	28.4%
Annual Average Percent Increase	0.81%

# Projected Household Growth

## Number of New Households



Source: US Census Bureau

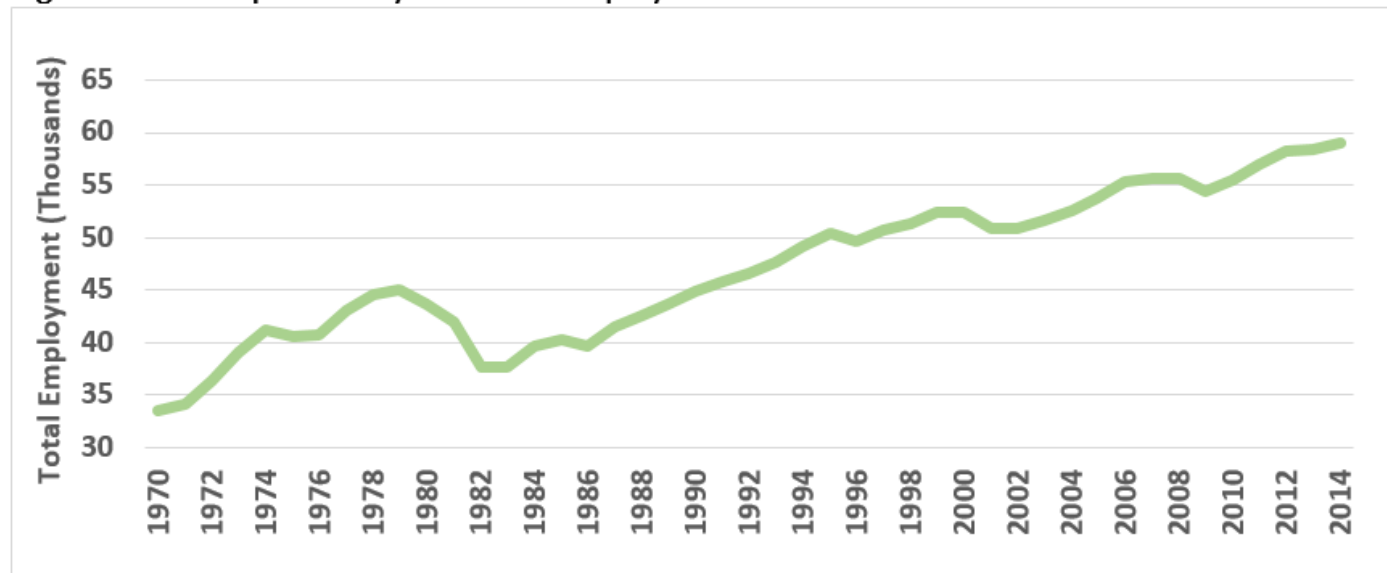
Source: DMATS

# Employment

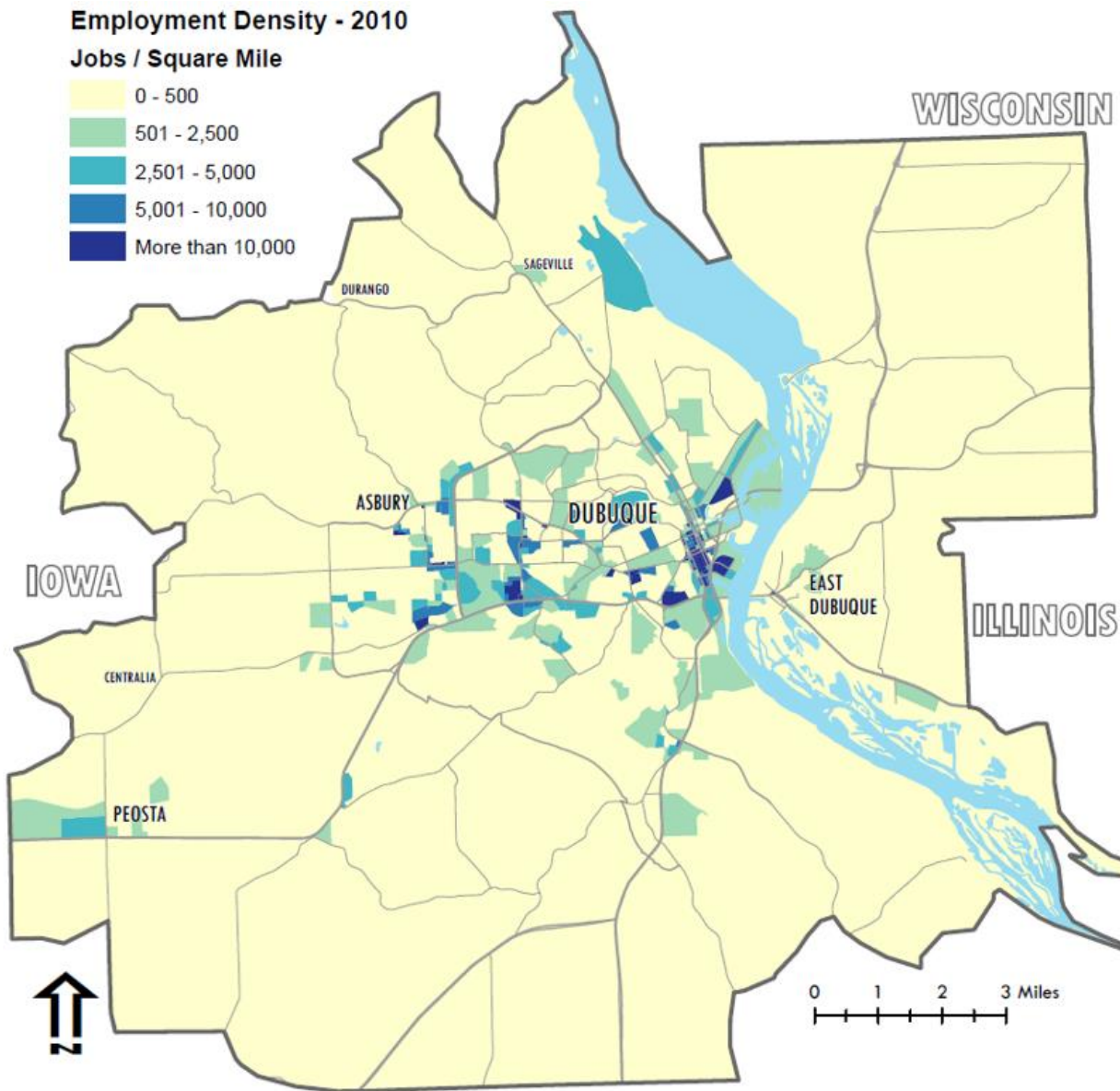
---

- Review of Historical Employment Trends
- Identify Existing Employment Areas

Figure 2.8 Dubuque County Historical Employment



Source: U.S. Bureau of Labor Statistics



Source: [Infoqroup Inc.](#), U.S. Census Bureau, and DMATS.



# 2045 Employment Projection

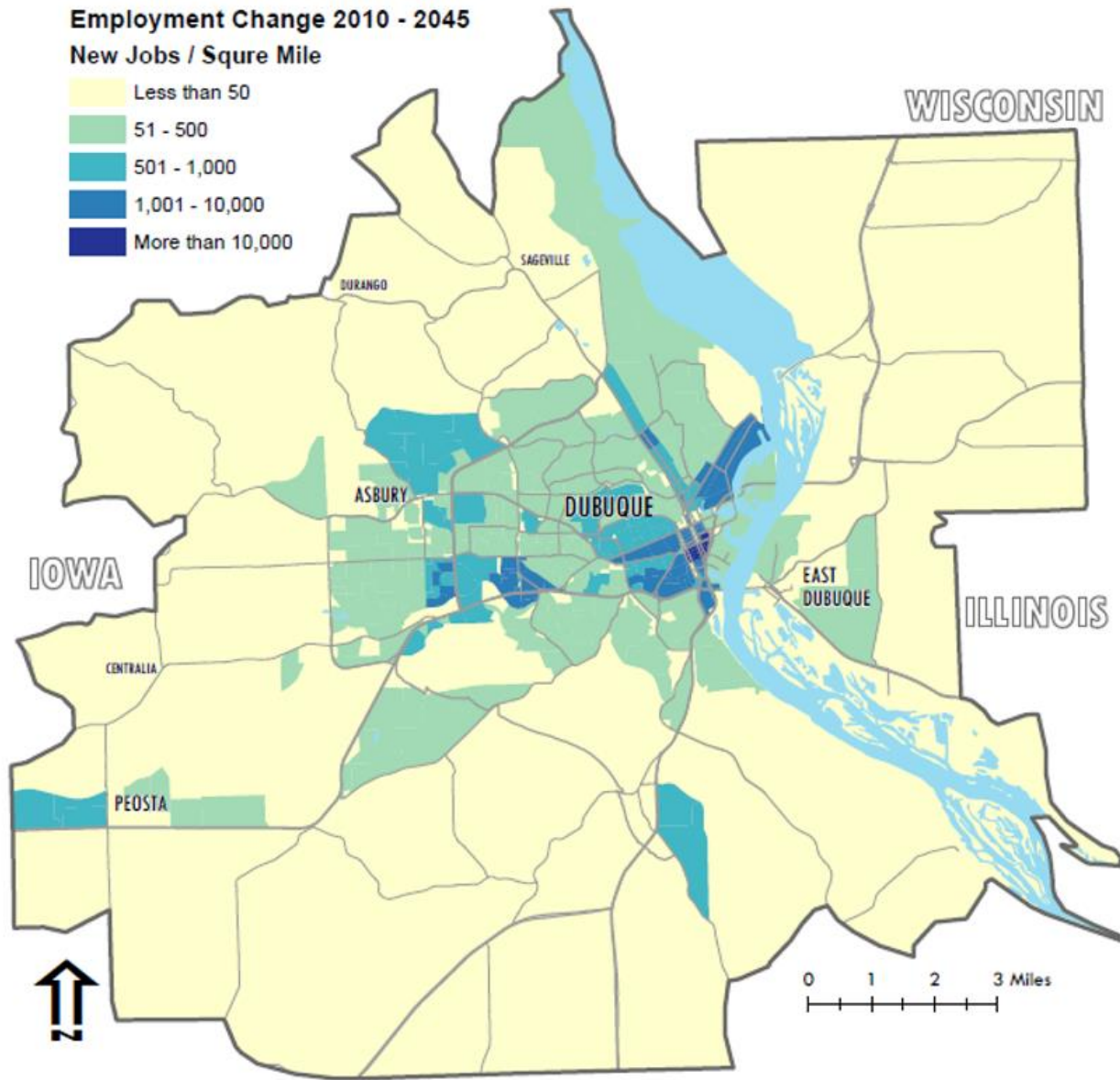
---

- Project Employment for 2045
- Projections based on growth rates economic forecasts
- Use population projection to check reasonableness of projection
- Allocate projected increase across DMATS region

**Figure 2.12 DMATS Approved Employment Projection Summary**

DMATS 2015 Base Year Employment	49,192
<u>EMSI</u> Annual Growth Rate	1.19%
Total DMATS Area Employment 2045	66,685
Percent Growth 2015-2045	35.56%
Annual Average Percent Growth	1.18%
Ratio Employment to Population	0.64 : 1

Figure 2.13 Projected Employment Growth



Source: DMATS

# Income

---

**Figure 2.14 Median Household Income 2014 dollars\***

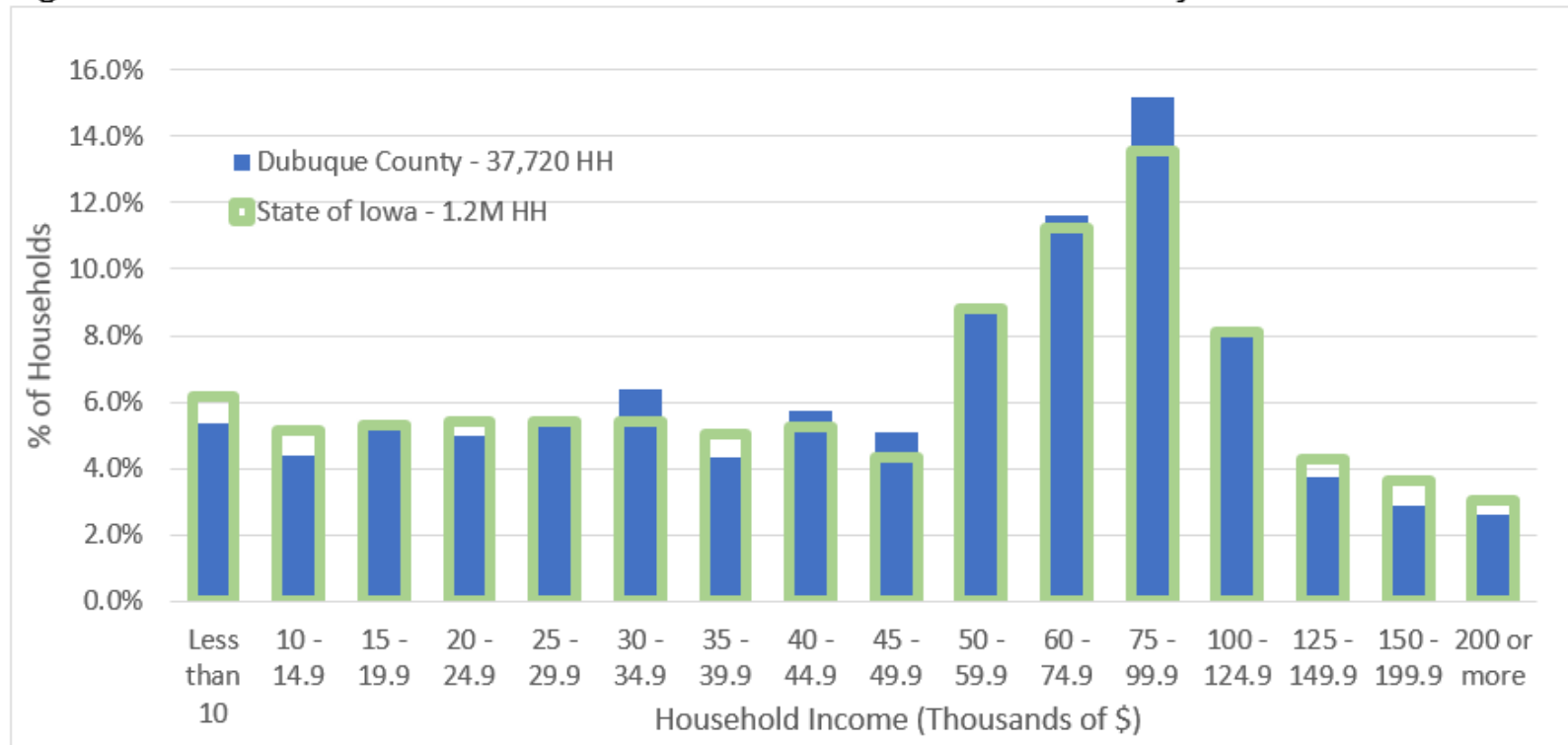
Year	Dubuque County	State of Iowa
2014	\$53,410	\$52,716
2010	\$52,797	\$53,122
1999	\$56,312	\$56,151
1989	\$54,048	\$55,869

*Source: US Census Bureau American Community Survey and Decennial Census*

*\*Values adjusted for inflation using the Consumer Price Index.*

# Income

Figure 2.15 Household Income in the Past 12 Months – 2014 Inflation Adjusted Dollars



Source: 2010-2014 American Community Survey 5-Year Estimates

# Race and Ethnicity

---

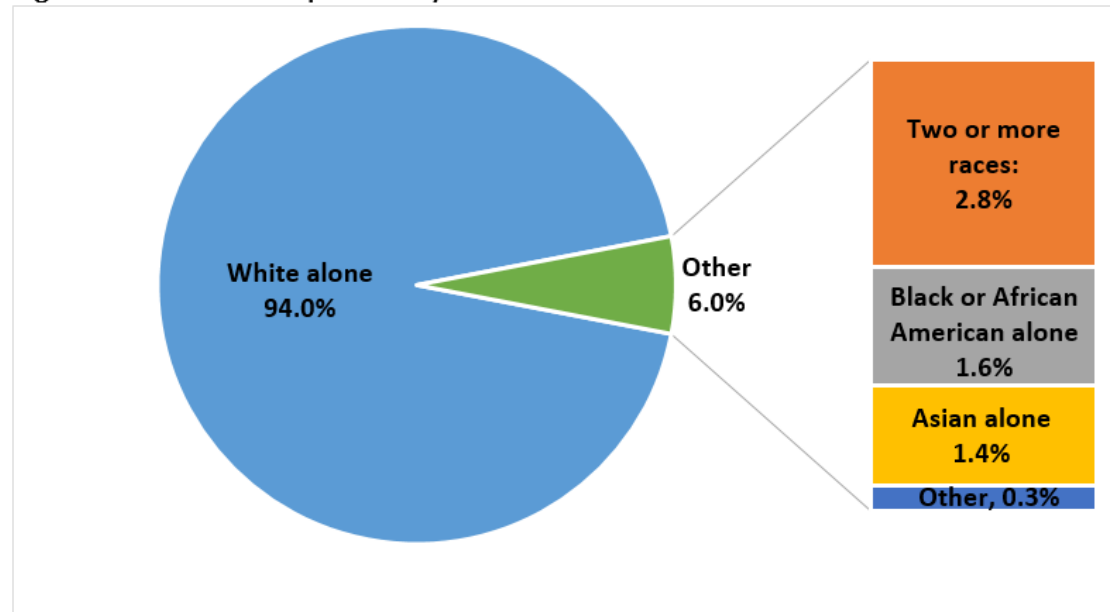
Minority groups make up an increasing proportion of County Population

1990 - 1.2%

2000 - 2.9%

2014 - 6%

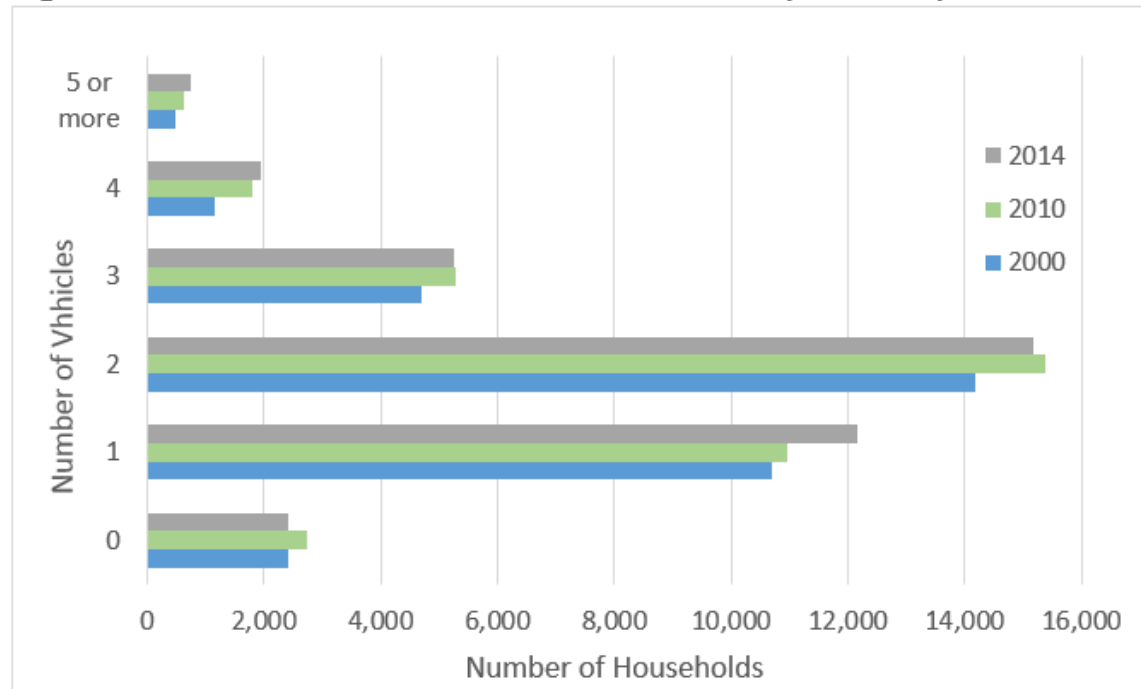
Figure 2.17 Race Dubuque County 2014



Source: 2010-2014 American Community Survey 5-Year Estimates

# Number of Vehicles Available

Figure 2.18 Number of Vehicles Available to Dubuque County Households



Source: 2010-2014 & 2006-2010 ACS 5-Year Estimates; 2000 Decennial Census